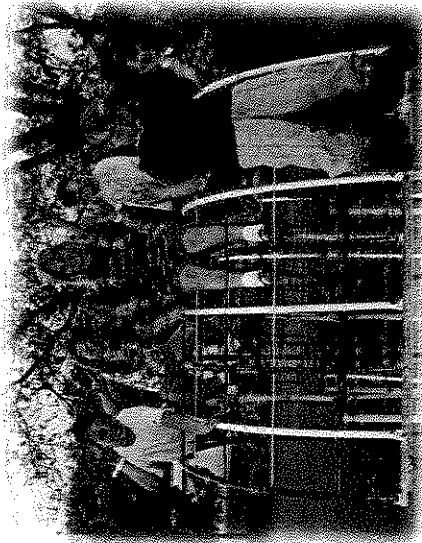


Making the Difference in . . .

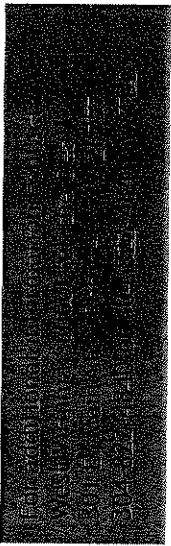
# EDUCATION

*West Virginia with families and schools to provide personal and educational opportunities.*

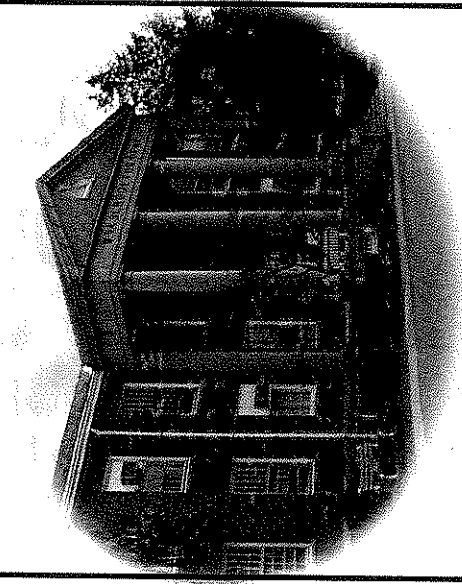


**T**he Elementary School for the Deaf is located on the campus of the West Virginia Schools for the Deaf and the Blind in Romney, West Virginia.

**T**he school offers a full range of accredited educational programs and services to elementary age deaf and hard of hearing children. WVSD seeks to help deaf and hard of hearing children develop their talents, reach their capabilities, and become independent, confident adults.



*West Virginia Schools for the Deaf and Blind*  
**Elementary School  
for the Deaf**



*Making the  
Difference . . .*



WEST VIRGINIA SCHOOLS FOR THE  
DEAF AND THE BLIND  
301 E. Main Street  
Romney, West Virginia 26757  
<http://wvsdb.state.k12.wv.us>

WEST VIRGINIA SCHOOLS  
FOR THE DEAF AND THE BLIND  
301 E. Main Street  
Romney, West Virginia 26757



## Elementary School for the Deaf ... Making the Difference with a **LANGUAGE RICH ENVIRONMENT**

**S**tudents at WVSD are immersed in a language rich environment. The school embraces the philosophy of Total Communication. Signed instruction is used in each classroom. Communication and speech skills are provided in individual sessions as well as integrated into the regular classroom.

**W**VSD focuses special attention on the language arts program in order to support the development of a strong foundation for literacy and academic learning. The program fosters the use of total communication and both written and spoken English.



## Elementary School for the Deaf ... Making the Difference with **ON-SITE SPECIALISTS**



*Speech-language pathologists facilitate natural and systematic development of listening, language, and speech skills specific to each child's needs.*

**T**he school features a full range of support specialists, including:

- \*Speech-Language Pathologists
- \*Full-time Audiologist
- \*Occupational Therapy
- \*Physical Therapy
- \*24-hour Infirmary
- \*Vision Clinics
- \*Individual and Group Counseling

**RESIDENTIAL LIVING PROGRAM:** Dormitory placement is an option for WVSD students. The residential living program is designed to be rich in language opportunities and age appropriate after-school activities. Students have opportunities to participate on local sports teams.